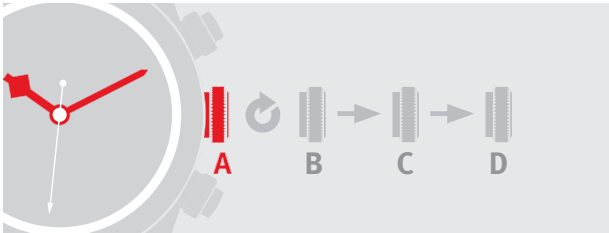




TUDOR

CHRONOGRAPH
WATCHES

SETTINGS



SCREWED-DOWN POSITION [position A]

Your TUDOR watch is equipped with a screw-down crown. Once this is fully screwed down against the case, your watch is guaranteed waterproof.

MANUAL WINDING [position B]

A watch equipped with a self-winding mechanical movement is wound automatically by wrist movements alone. To ensure optimum winding, wear your watch daily.

Before you first use the watch or if it has stopped, you will need to wind it manually by unscrewing the crown and then turning it clockwise; the other direction is inactive.

RAPID DATE-SETTING [position C]

In order to adjust the date, unscrew the crown and pull it out to the second notch. Then turn it clockwise for MT calibres or anticlockwise for other calibres (see the calibres listed at the end of this document), until the desired date appears in the window. The date is corrected when the hands pass midnight. During this operation, your watch will keep running.

TIME-SETTING [position D]

In order to adjust the time, unscrew the crown and pull it out to the last notch. Then turn it in either direction until the hands indicate the correct time. The small seconds hand is stopped during this operation, allowing the time to be set accurately. To synchronize the small seconds hand and minute hand, the fine adjustment must be performed in an anticlockwise direction.

If the watch has stopped, take care not to confuse midday and midnight during this operation. Move the hands forward to 12 o'clock; if the date changes, then it is midnight.

DATE-SETTING FOR FASTRIDER [at 9 o'clock]

In order to adjust the date, we advise you to use only the TUDOR tool as depicted in the diagram on the following page. It is supplied with your watch, and serves to handle the date corrector situated at 9 o'clock. You can change the date simply by pressing the corrector using the TUDOR tool. The date cannot be changed by means of the crown.

To avoid damaging the movement, it is vital not to adjust the date between 20:30 and 23:00.



CHRONOGRAPH FUNCTION



The chronograph function enables you to measure times to fractions of a second, thanks to the centre seconds hand. On some models, to be enabled for use, the pushers must be unscrewed; lock the pushers after use.

To measure longer intervals, a chronograph with **two counters** has an additional 45-minute counter.

A chronograph with **three counters** has two additional 30-minute and 12-hour counters.

PUSHER AT 2 O'CLOCK
start/stop

- ① Pressing the start/stop pusher a first time will start the chronograph.
- ② Pressing it again will stop the chronograph.
- ③ Pressing a third time will start it again.

In this way you can measure several times in succession.

PUSHER AT 4 O'CLOCK **reset**



Resetting is only possible
when the chronograph
has stopped.

To reset the chronograph
counters, press the reset
pusher; the chronograph will
be ready for use again.



TACHYMETER FUNCTION






The bezel on your watch has a tachymeter function used to measure a speed or a flow rate using the chronograph function. Select the desired unit of measurement (metre, kilometre, mile, litre, etc.), activate the chronograph and stop it when the desired unit is reached. The centre seconds hand indicates the number of units per hour on the tachymeter scale.

In order to ensure the precision of the tachymeter, the unit of measurement must be exactly reached. In addition, the time of measurement should not exceed 1 minute and should not be less than 9 seconds.

SECOND TIME-ZONE FUNCTION

[12-hour graduated rotatable bezel]

The second time-zone function is used to display two time zones simultaneously. The time of the second time zone is read by means of the hour hand, the minute hand and the bidirectional rotatable bezel. Simply turn the bezel clockwise or anticlockwise depending on the desired time zone.

-  When you move westward, for example from Geneva to Mexico, turn the bezel clockwise,
-  then turn it anticlockwise when you move eastward, for example from Geneva to Tokyo.
-  The triangle engraved on the bezel serves as a benchmark; in neutral position, it stands at 12 o'clock.

RECOMMENDATIONS

Bronze: Your Black Bay Bronze is designed in bronze, in this case a high-performance aluminium bronze alloy, which guarantees the development of a subtle and unique patina to match its user's habits.

Cleaning: Use a microfibre cloth and wash the metal, rubber, fabric bracelets and waterproof cases from time to time with a soft brush and soapy water. We recommend that you do not use abrasive or corrosive products (solvents, detergents, perfume, etc.).

Guarantee: Refer to the guarantee manual supplied with your watch.

Leather: To preserve your leather strap, we recommend protecting it from water and moisture.

PVD: Your Black Bay Dark is finished with a black coating obtained using a Physical Vapour Deposition (PVD) process. Although the coating is extremely resistant, regular wear and tear can cause this decorative layer to deteriorate over time. The warranty does not cover this type of aesthetic wear.

Salt water: Always rinse your watch with fresh water.

Screw-down winding crown: After each operation, remember to push the crown back in and screw it back down carefully against the case, in order to preserve your watch's waterproofness.

Service: Each TUDOR watch is a complex precision mechanism and, as such, requires periodic servicing and maintenance to guarantee optimum performance. Expert TUDOR servicing can be carried out via any of the Official Retailers and Service Centres in the extensive ROLEX or TUDOR service network. Visit TUDORWATCH.COM to view the list of Official TUDOR Retailers and Service Centres in your area.

Strap: Only Official TUDOR Retailers are authorized to change the watch strap.

REFERENCE	MODEL
42000CN/CR	FASTRIDER BLACK SHIELD
70330B/N	HERITAGE CHRONO & CHRONO BLUE
79350	BLACK BAY CHRONO

CALIBRE	POWER RESERVE	WATERPROOFNESS
7753	46 h	150 m
2892	42 h	150 m
MT5813	70 h	200 m



TUDOR

© Montres TUDOR SA
Rue François-Dussaud 3-5-7
1211 Geneva 26, Switzerland

TUDORWATCH.COM

Montres TUDOR SA reserves the right to modify the models illustrated in this publication at any time.

587.52 EN – 3.2018

VISIT TUDORWATCH.COM
AND EXPLORE MORE
